



CARD INSERTER, EJECTOR & PULLER

R1107
Inserter/Extractor

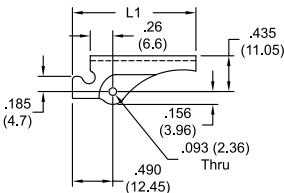
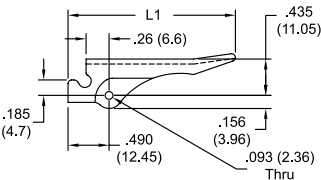
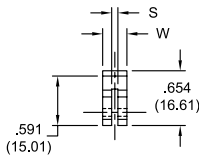
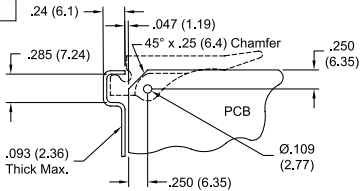


Fig. 1

Fig. 2



Typical Application

- Material: UL94 V-0 Glass Filled Nylon 6/6
- Color: Natural

Item No.	S	W	L1	PCB Thickness	Fig.	Roll Pin Supplied	Bulk Pack Qty.
R1107-062	.075 (1.9)	.29 (7.4)	2.0 (50.8)	.062 (1.6)	1	RRP-250	100
R11073-062	.075 (1.9)	.35 (8.9)	2.0 (50.8)	.062 (1.6)	1	RRP-312	100
R11073-093	.100 (2.5)	.35 (8.9)	2.0 (50.8)	.093 (2.4)	1	RRP-312	100
R110710-062	.075 (1.9)	.29 (7.4)	1.5 (38.1)	.062 (1.6)	2	RRP-250	100
R1107310-093	.100 (2.5)	.35 (8.9)	1.5 (38.1)	.093 (2.4)	2	RRP-312	100

R1001/R1002/R1209
Inserter/Extractor

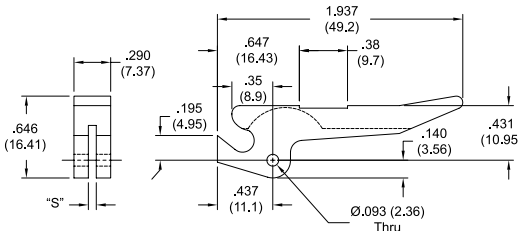


Fig. 1

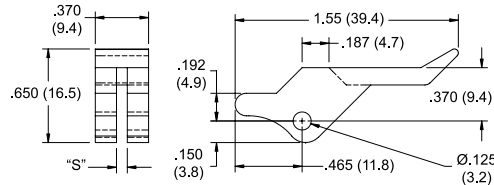
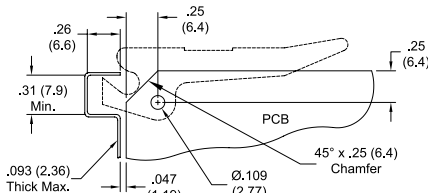
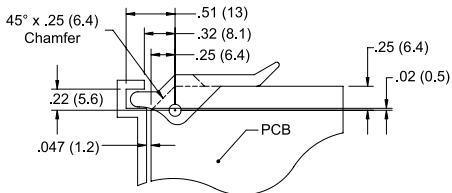


Fig. 2



Typical Application

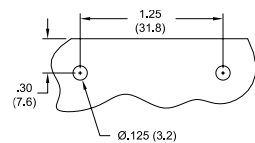
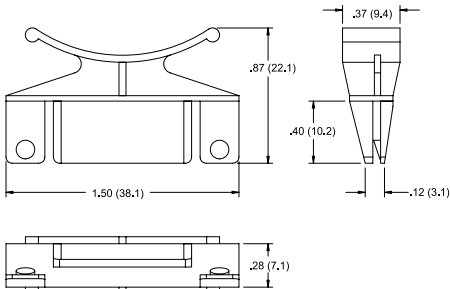


Typical Application

- Strong and rigid with optimum leverage to assist in both insertion and extraction
- RRP roll pin is supplied for mounting (see page 712)
- Material: UL94 V-2 Nylon 6/6
- Color: Natural

Item No.	S	PCB Thickness	Fig.	Roll Pin	Bulk Pack Qty.
R1001-062	.075 (1.9)	.062 (1.6)	1	RRP-250	100
R1002-093	.100 (2.5)	.093 (2.4)	1	RRP-250	100
R1209-062	.075 (1.9)	.062 (1.6)	2	RRP-375	100
R1209-093	.100 (2.5)	.093 (2.4)	2	RRP-375	100

CCP-1-01
Circuit Board Puller



Recommended Mounting Holes

- Curved tab provides fingertip grip for board insertion and extraction
- Material: UL94 V-2 Nylon 6/6
- Color: Natural

Item No.	Accepts PCB Thickness	Bulk Pack Qty.
CCP-1-01	.062 (1.6)	500